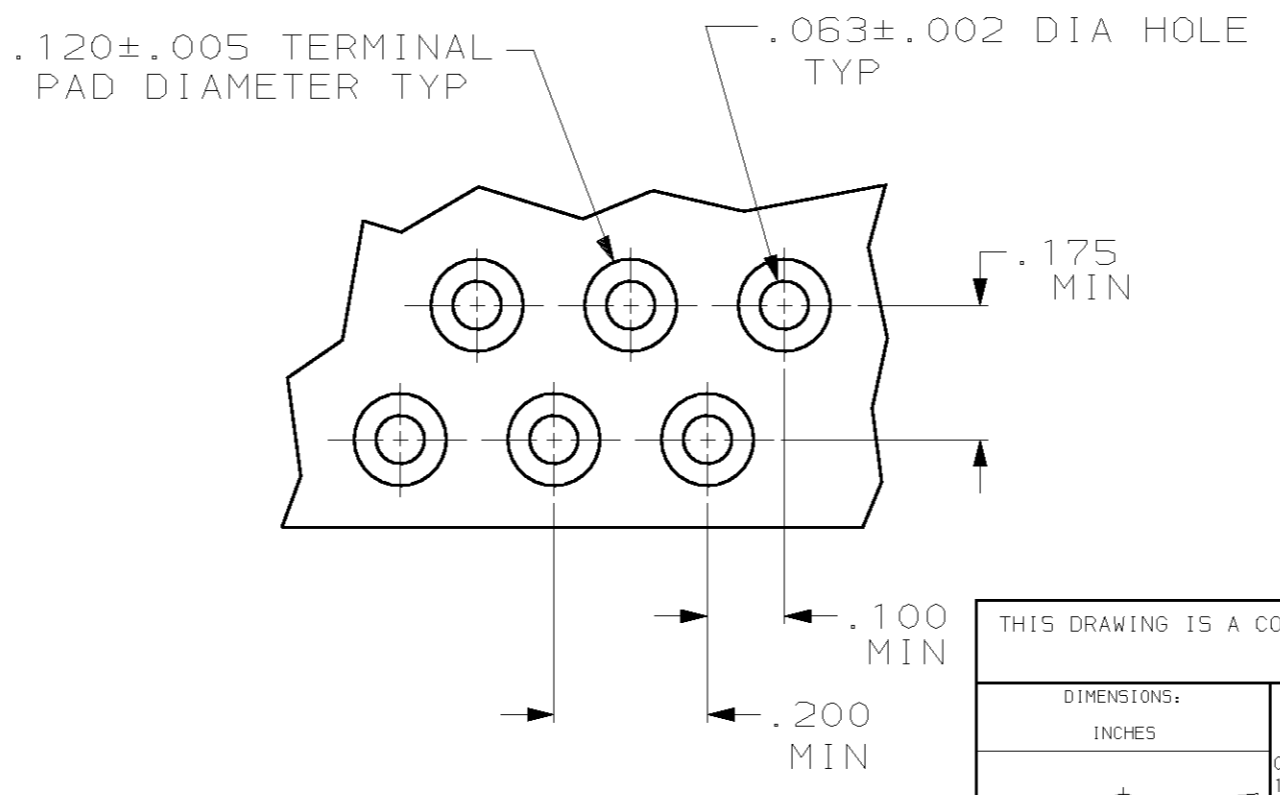
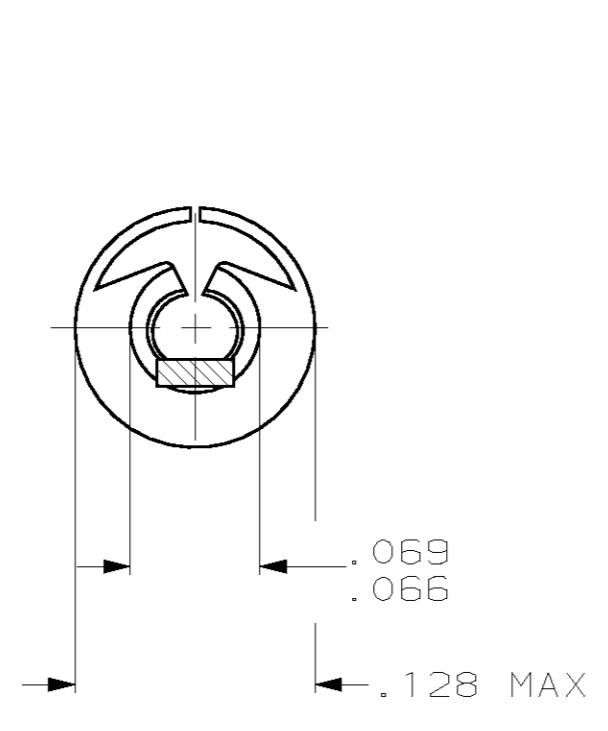
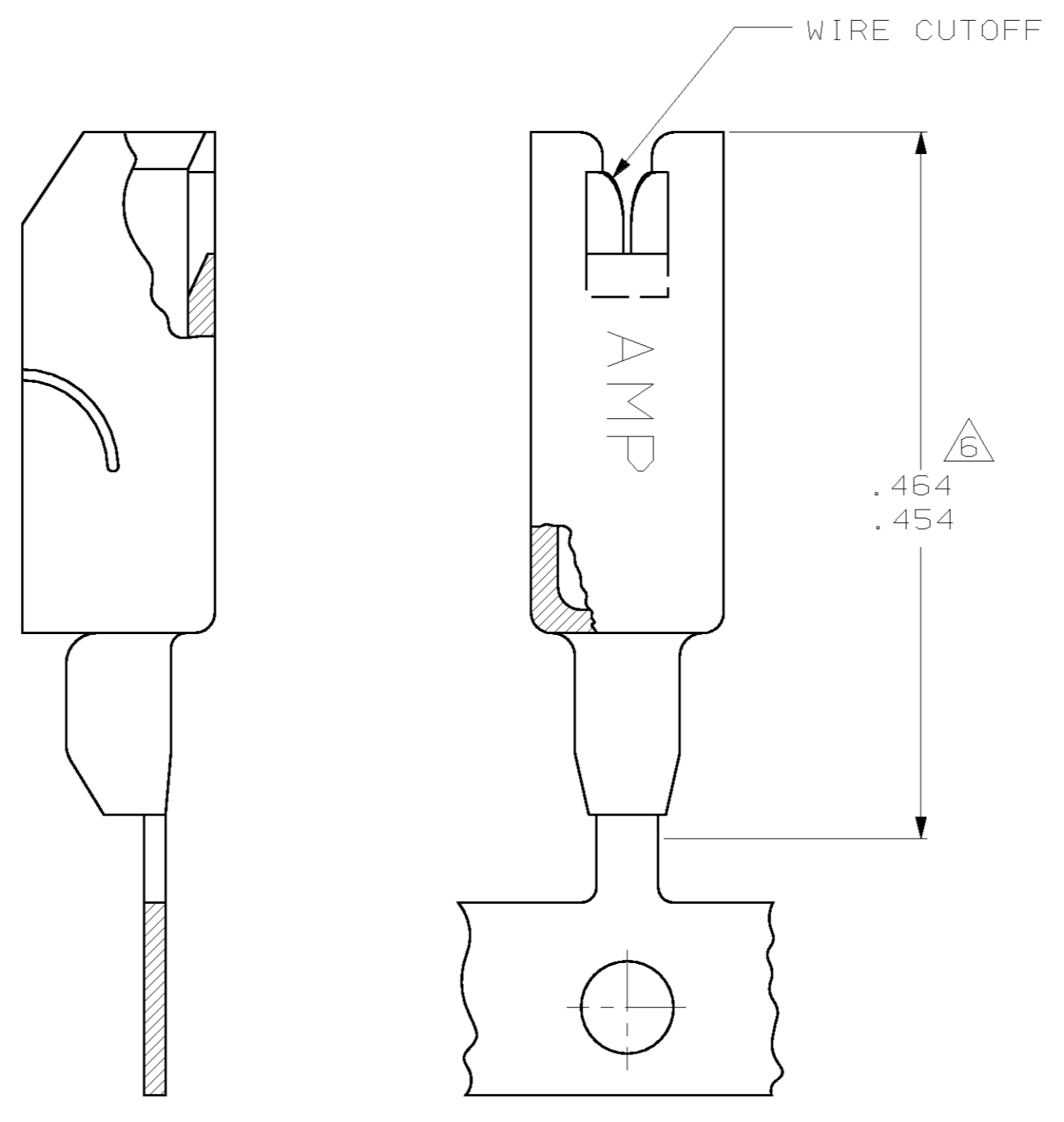
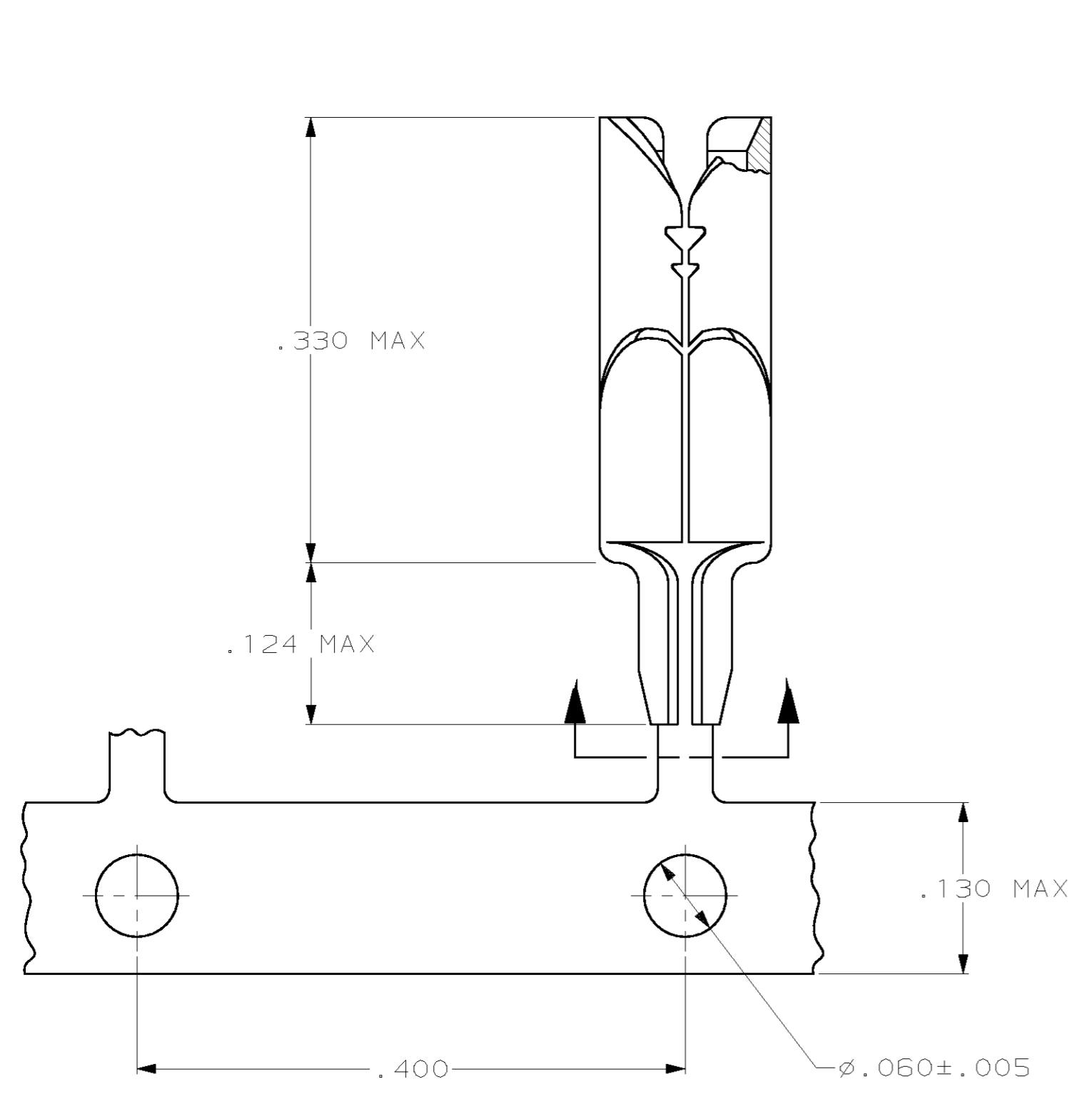


THIS DRAWING IS UNPUBLISHED. RELEASED FOR PUBLICATION
 BY AMP INCORPORATED, ALL RIGHTS RESERVED.

LOC	DIST	REVISIONS			
P	LTR	DESCRIPTION	DATE	DWN	APVD
AA	27	A	REL PER 063A-0445-01	03DEC01	JR EH

- 1 FOR USE IN PRINTED CIRCUIT BOARDS .062/.094 THICK.
- 2 WIRE RANGE : 22-26 AWG SOLID OR STRANDED WIRE. MAXIMUM INSULATION DIA OF .086 IS ACCEPTABLE FOR MOST APPLICATIONS.
- 3 TERMINAL SHALL ACCOMMODATE ONE OR TWO WIRES OF THE SAME TYPE AND WITHIN PLUS OR MINUS ONE WIRE GAGE SIZE. EXAMPLE: 24 AWG MAY BE MIXED WITH EITHER 26 OR 22 AWG.
- 4 USE INSERTION TOOL, P/N 231890-1.
- 5 WHEN USING TEFLON INSULATED WIRES USE 1217675-1.
- 6 CUT-OFF DIMENSION FOR LOOSE PIECE PARTS ONLY.
- 7 ONE LOOSE END STYLE SPLICE ALLOWED PER REEL.
- 8 PREPRODUCTION - FASR REQ.



SUGGESTED P.C. BOARD MOUNTING DIMENSIONS SCALE 4:1

THIS DRAWING IS A CONTROLLED DOCUMENT.	
DIMENSIONS: INCHES	TOLERANCES UNLESS OTHERWISE SPECIFIED:
	0 PLC ±
	1 PLC ±
	2 PLC ±
	3 PLC ±
	4 PLC ±
	ANGLES ±
MATERIAL: PHOS BRONZE	FINISH: PRE-TINNED

230549-1	STRIP MOUNTED	AS SHOWN	1217675-1
TERMINAL INSERTION TOOL	DESCRIPTION	PART NO.	
DWN JR RUTH 10JUL01 CHK MS FEHER 10JUL01 APVD E HOWARD 10JUL01 PRODUCT SPEC APPLICATION SPEC		AMP AMP Incorporated Harrisburg, PA 17105-3608	
NAME: TERMINAL, .125 DIA WITH CUTOFF, AMP BARREL		SIZE: A2	RESTRICTED TO: -
CAGE CODE: 00779		DRAWING NO: 1217675	SCALE: 10:1
CUSTOMER DRAWING		SHEET: 1 OF 1	REV: A

1217675